

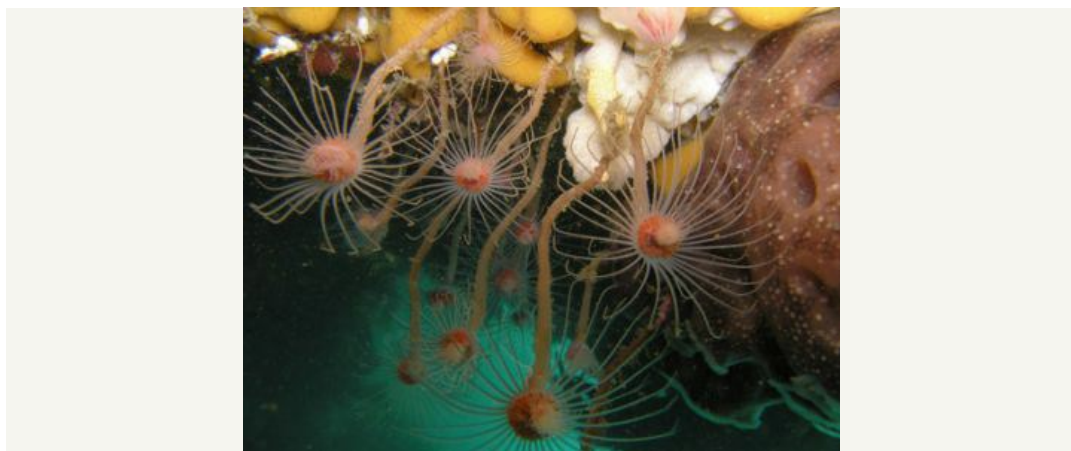
Port Phillip Heads Marine National Park

- Things to do
- Tours
- Culture and heritage
- Environment
- Safety and regulations

Port Phillip Heads Marine National Park



[Photo](#) | [Share this page](#)



Hydroids (photo: Don Love)
2 years ago from Parks Victoria
Location: Point Lonsdale
[Report this content](#)



Going Fishing?

Fishing is prohibited in marine national parks and sanctuaries. The Victorian Recreational Fishing Guide app includes a GPS locator to alert you to all the park boundaries.

Change of conditions

[Add change of condition](#)

- No change of conditions apply



The park is an internationally recognised dive site, offering excellent diving and snorkelling opportunities for varying levels of experience.

The park is made up of six separate marine areas around the southern end of Port Phillip:

- Swan Bay
- Mud Islands
- Point Lonsdale
- Point Nepean
- Popes Eye
- Portsea Hole

The habitats found within this park are diverse, ranging from mudflats and seagrass meadows to deep and shallow reefs, rocky shores and beautiful pelagic waters. The variety of habitats, along with the central Victorian location, results in the presence of a great abundance of marine species.

The area marks the end of the range for some animals and plants that prefer the cold waters of western Victoria, but it also supports warmth-loving species from eastern Australia that can survive in the bay's relatively calm, shallow waters.

A high proportion of Victorian species of marine flora and fauna are represented in the Port Phillip Head's region.

Access

Swan Bay and Point Lonsdale are accessible by either shore or boat, whereas Portsea Hole, Point Nepean, Pope's Eye and Mud Islands are only accessible by boat. Queenscliff, Swan Bay and Portsea all have launching points.

Aboriginal Traditional Owners

Parks Victoria acknowledges the Aboriginal Traditional Owners of Victoria - including its parks and reserves. Through their cultural traditions, Aboriginal people maintain their connection to their

What's on

Submit an event at Port Phillip Heads Marine National Park

[Create an event](#)

Park Statistics

Established	November 2002
Area	3580ha

Contact information

Call Parks Victoria on 13 1963

[Send the park team a message](#)

ancestral lands and waters.

Indigenous tradition indicates that the Bellarine Peninsula side of the Marine National Park is part of the *Country* of the Wathaurong, and the Mornington Peninsula side of the Marine National Park, including Mud Islands, is part of *Country* of the Boonwurrung.

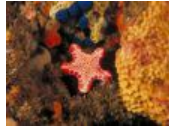
Further information is available from [Aboriginal Affairs Victoria AAV](#) and [Native Title Services Victoria](#)

Popular things to do



Point Lonsdale

The Point Lonsdale section of the park is located between Queenscliff and the western side of the Port Phillip entrance....



The Rip

The Rip offers spectacular wall diving and challenging drift dives. You'll see amazing colour and diversity in the marine creatures....



Pope's Eye

Pope's Eye is located about 5km north east of Portsea and is an artificial structure protruding above the water surface....



Swan Bay

Swan Bay is a good spot for canoeing. On a calm day canoers can see the marine life passing underneath...



Portsea Hole

Portsea hole is a depression within the bed of the old Yarra River that has flowed through this area during...

[View all things to do](#)

Related publications

[Intertidal Reef Monitoring at Port Phillip Heads Marine National Park \(PDF 992.5 KB\)](#)

[Marine National Parks and Marine Sanctuaries Boundary Coordinates \(PDF 368.8 KB\)](#)

[Marine Pests - A Threat to Port Phillip & Western Port Marine Protected Areas \(PDF 923.9 KB\)](#)

[Port Phillip Heads Marine National Park - Park note \(PDF 460.6 KB\)](#)

[Port Phillip Heads Marine National Park Management Plan \(PDF 3.9 MB\)](#)

[Port Phillip Heads Marine National Park – Point Lonsdale - Marine Natural Values Study \(PDF 1.8 MB\)](#)

Visitor experiences

You must be a registered user to make a comment, please log in to post a comment.

[Login](#) | [Register](#)



Parks Victoria : Introducing Pope's Eye



Parks Victoria : Diving with the seals

[View image in Gallery](#)

2 years ago - [Comment](#) [Report this content](#)

Page 1 of 1.

Related places



Mornington Peninsula National Park

This narrow strip of coast and bushland offers a wonderful blend of natural scenery and fascinating historic features. The park ...



Barwon Bluff Marine Sanctuary

Located near the mouth of Barwon River, Barwon Bluff Marine Sanctuary protects 17ha predominately composed of reef. The eastern half ...



Point Danger Marine Sanctuary

Located in Torquay, one of Victoria's favourite seaside towns, the reef is ideal for snorkelling and exploring the diverse marine ...

Related groups

Friends of Mud Islands

Contact: Parks Victoria Ranger Lachlan Jackson | Ph: (03) 5215 5100
Address: PO Box 2010, Geelong 3220
Website: home.vicnet.net.au/%7Efomi/

Friends of the Marine Discovery Centre

Contact: Parks Victoria Ranger Stephen Tuohy | Ph: (03) 5215 5100
Address: PO Box 127, Queenscliff 3225
Email: membership@friendsofmdc.org
Website: www.friendsofmdc.org/index.htm

Swan Bay Environment Association

Address: PO Box 143, Queenscliff 3225
Website: sbea.webuda.com

Marine Care Port Phillip Heads Marine National Park

Contact: Parks Victoria Ranger Brooke Connor | Ph: 0422 705 768

Find

[Find a park](#)
[Parks by name](#)
[Parks map search](#)
[Bays and rivers map](#)
[Search Accessibility](#)
[Heritage](#)
[Take a tour](#)
[Publications](#)

[Park Search](#)

Get involved

[What's On](#)
[Have your say](#)
[Grants](#)
[Friends groups](#)
[Volunteer](#)

Learn

[Info for students](#)
[Teacher resources](#)
[Discovery Programs](#)

Park management

[Plans and projects](#)
[Environment](#)
[Aboriginal joint management](#)
[Fire management](#)
[Bays and waterways](#)
[Legislation](#)
[Licences and permits](#)
[Firewood collection](#)
[Beekeeping](#)

About

[Who we are](#)
[Publications](#)
[Healthy Parks Healthy People](#)
[News and media releases](#)
[Tenders and notices](#)
[Employment](#)
[Science Award](#)

Contact us

[Social media hub](#)
[Feedback](#)
[Media centre](#)